

**idea**

## WHO ARE WE

Idea is a construction company specialized in providing solutions primarily in the **high-end residential and luxury hospitality segments**, backed by a track record of over two decades of experience.

**Excellence is our standard**; we are recognized for delivering first-class services consistently. We highly prioritize human talent, creativity and attention to detail, viewing these values as essential to our mission:

**To fulfill each project with exceptional quality** that surpasses client expectations and vision.

# Our Services

---

## **Comprehensive Construction Management**

- General Contractor
- Project Management
- Design Management
- Pre-Construction Services
- Interior Design
- FF&E and OS&E Procurement Installation

# Results

**+20**

Years in the hospitality  
construction sector.

**6**

Mega high-end resorts

**+30**

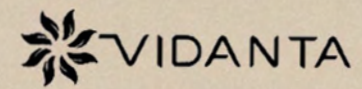
Completed residential  
projects

**+300k**

Built square meters

# Clients

*Montage*



**XALA**

ROSEWOOD  
MANDARINA  
MEXICO

# Montage

MONTAGE LOS CABOS

LOCATION:

CABO SAN LUCAS, BAJA CALIFORNIA SUR.

YEAR: 2021

SERVICES: **CONSTRUCTION MANAGEMENT.**

The complex features 15 hectares of development, 50,000 square meters built, 122 rooms and 52 residences, 3,000 square meters of pools, tennis courts, landscaping, 2 specialty restaurants, ballrooms, meeting rooms, and a 2,500 square meter premium spa.

From December 2016 until its completion in 2018, **Idea** provided construction management services.





FOUR SEASONS

FOUR SEASONS RESORT AND RESIDENCES

LOCATION:

LOS CABOS, BAJA CALIFORNIA SUR.

YEAR: 2023

SERVICES: **GENERAL CONTRACTOR SERVICES**

Four Seasons Los Cabos, luxurious beachfront offering a blend of sophisticated design and world-class amenities.

Idea was the general contractor for public amenities and exterior works at Four Seasons. Inspired by the client's vision, **Idea** completed 5,500 m<sup>2</sup> of work with premium finishes, perfectly suited to this prestigious project. We successfully installed 3,600 m<sup>2</sup> of natural stone finishes, adding a striking and unique character to the surroundings.





ENCANTO LIVING

LOCATION:

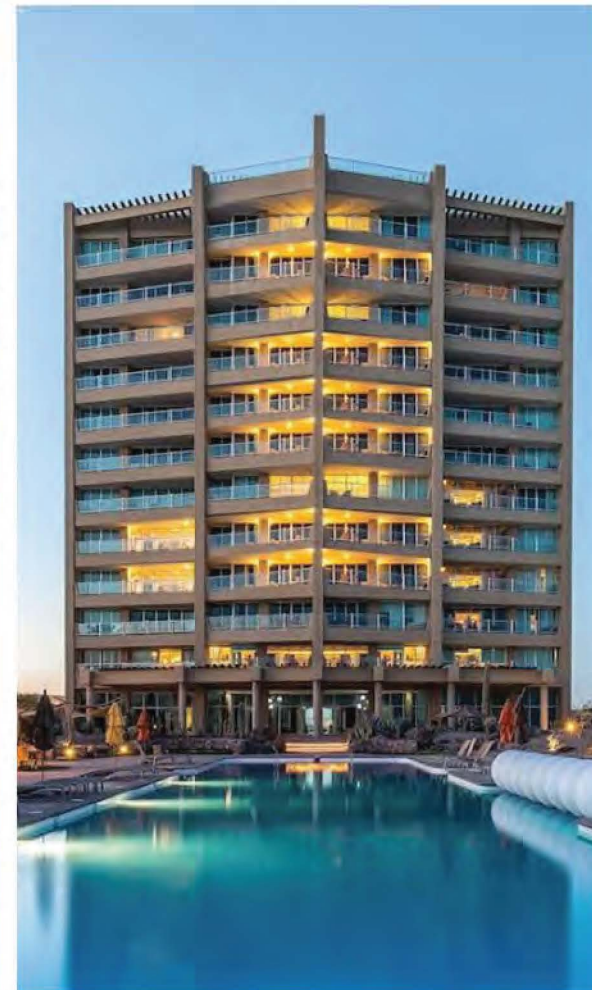
PUERTO PEÑASCO, SONORA

YEAR: 2007

SERVICES: **CONSTRUCTION AND DEVELOPMENT  
MANAGEMENT.**

Encanto Living is a 13-story luxury condominium tower within the Vidanta community, offering 10,200 m<sup>2</sup> of living space and premium amenities, including a lobby, swimming pool, tennis courts, covered parking, and a multifunctional room.

**Idea** managed its construction and development, ensuring seamless execution, precision, and quality to create an exceptional living experience.





HOTEL SAN CRISTOBAL BAJA

LOCATION:

TODOS SANTOS, BAJA CALIFORNIA SUR

YEAR: 2023

SERVICES: **POOL CONSTRUCTION**

Hotel San Cristóbal sits on the southwestern edge of the Baja peninsula in Todos Santos, México, where the Sierra de la Laguna mountains meet the Pacific Ocean.

With carefully crafted pools and elegant stone and marble finishes, the hotel offers refined yet organic ambience, enhancing the guest experience. Recognized for its exceptional hospitality, it has been awarded 1 Key in the Michelin Guide's hotel selection.





JAKARTA CLUBLIFE

LOCATION:

HERMOSILLO, SONORA

YEAR: 2015

SERVICES: **CONCEPT, CONSTRUCTION & INTERIOR DESIGN**

Jakarta Clublife is more than a nightclub - it's an experience. Located in Hermosillo, Sonora, it immerses guests in a world of energy, music and design.

With a bold concept to its architectural execution, every detail was designed to elevate the nightlife experience. Custom lighting, high-end finishes and immersive interiors come together to create a dynamic atmosphere.





HYATT CENTRIC PLAYA DEL CARMEN

LOCATION:

PLAYA DEL CARMEN, QUINTANA ROO.

YEAR: 2015

SERVICES: **FF&E AND OS&E LOGISTICS AND  
INSTALLATION & QUALITY ASSURANCE SERVICES.**

Thompson Playa del Carmen is a luxury hotel that blends elegance and modern design, featuring a stunning rooftop, infinity pool, and world-class dining.

With a meticulous approach, our team handled FF&E and OS&E logistics and installation, ensuring seamless delivery and setup of furnishings, fixtures, and equipment. Our quality assurance services upheld the highest standards, enhancing the hotel's exceptional guest experience.



# XALA

XALA

LOCATION:

CHALACATEPEC, JALISCO

YEAR: 2022

SERVICES: **DEVELOPMENT** **CONSULTANCY** **PRE**  
**CONSTRUCTION WORKS.**

Xala is an eco-conscious development within a vibrant community, surrounded by mango fields, beaches, and reforestation efforts, with a design focused on low-density development to support regenerative travel.

**Idea** provided development consultancy during the pre-construction phase, ensuring that every aspect aligned with the project's vision. Our guidance supported the





## ALTARENA BEACHFRONT LIVING

LOCATION:

SONORA, MÉXICO

YEAR: 2023

SERVICES: **DEVELOPMENT STRATEGIC CONSULTANCY  
AND DEVELOPMENT MANAGEMENT.**

The project spans 30 hectares of Sonoran beachfront, featuring unique topography shaped by sand dunes that offer magnificent views of the Sea of Cortez.

With a forward-thinking approach, we provided development consultancy during the pre-construction phase, ensuring the project's vision was executed with



ROSEWOOD  
MANDARINA  
MEXICO

ROSEWOOD MANDARINA

LOCATION:

RIVIERA NAYARIT

YEAR: 2024

SERVICES: **CONSTRUCTION SERVICES AND FF&E  
PROCUREMENT AND INSTALLATION.**

The Rosewood hotel is nestled within the exclusive Mandarin community, drawing inspiration from its natural surroundings.

Committed to excellence, we managed the procurement and installation of FF&E, ensuring every detail complemented the hotel's high-end design. Our construction services delivered precision and craftsmanship, elevating the luxury experience.





QUINTA DE ANZA

LOCATION:

HERMOSILLO, SONORA

YEAR: 2016

SERVICES: **DESIGN, CONSTRUCTION AND INTERIOR DESIGN.**

Quinta de Anza, a 200-year-old estate, has been beautifully restored to host elegant events, especially weddings. Its romantic ambiance and artistic details create a timeless and sophisticated setting.

Honoring the estate's background, we oversaw the design, construction, and interior design, enhancing its historic charm with refined craftsmanship. The result is a stunning venue that blends heritage with elegance.



# OUR TEAM

Our professional experience in executing challenging projects is not the only thing that characterizes us.

We take great pride in the collaboration of a highly committed team that shares a passion for creating and bringing ideas to life, always delivering the highest quality.

## MANAGEMENT



**Ramses Vera**  
Chief Executive Officer  
& Partner



**Alejandro Platt**  
Chief Financial Officer  
& Partner



**Enrique Corella**  
Chief Commercial Officer  
& Partner



**Frank Acosta**  
Project Director & Partner

## CONSTRUCTION



**Raúl Angulo**  
Senior Project Manager



**Carlos Leyva**  
Project Manager



**Tania García**  
Project Manager

## FF&E AND DESIGN



**Mariana Córdova**  
Design Project Manager



**Iridian Verdugo**  
Design Project Coordinator

## BACKBONE SUPPORT



**Claudia Díaz**  
Chief of Staff



**Enrique A. Corella**  
Purchasing Manager



**Cesar Portillo**  
Cost Manager

**idea**

For additional information, please  
contact us at [info@ideainm.com](mailto:info@ideainm.com)